



## Changing data management in Blue Growth

Donatella Castelli (CNR-ISTI)

Project coordinator

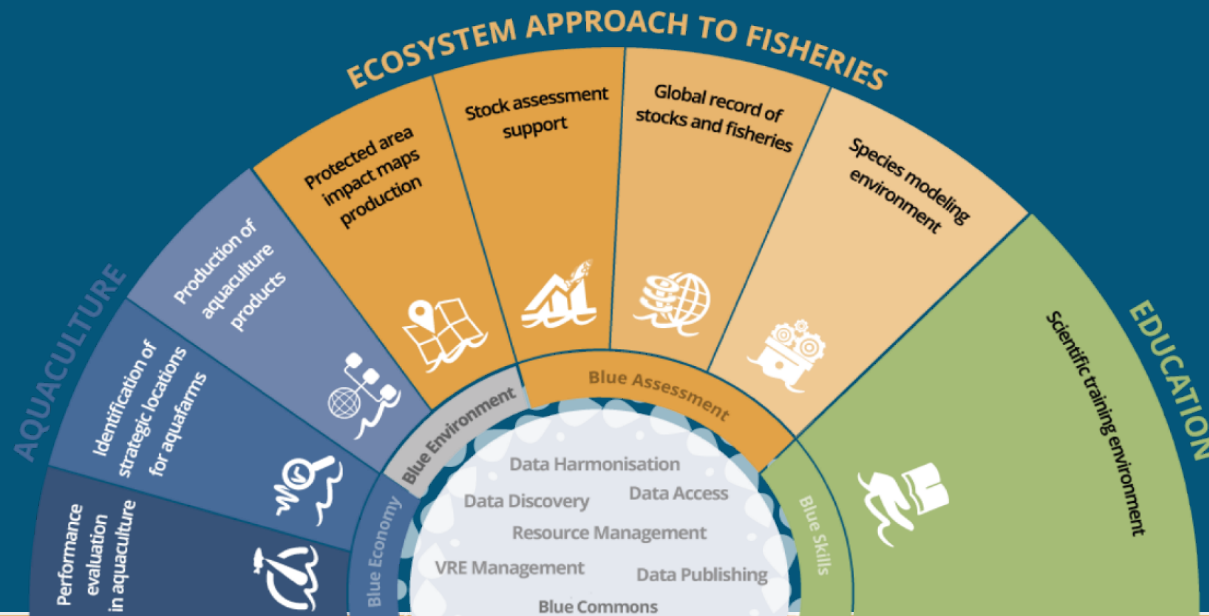
donatella.castelli@isti.cnr.it

Understanding how ecosystems of EU  
e-infrastructures can boost Blue Growth

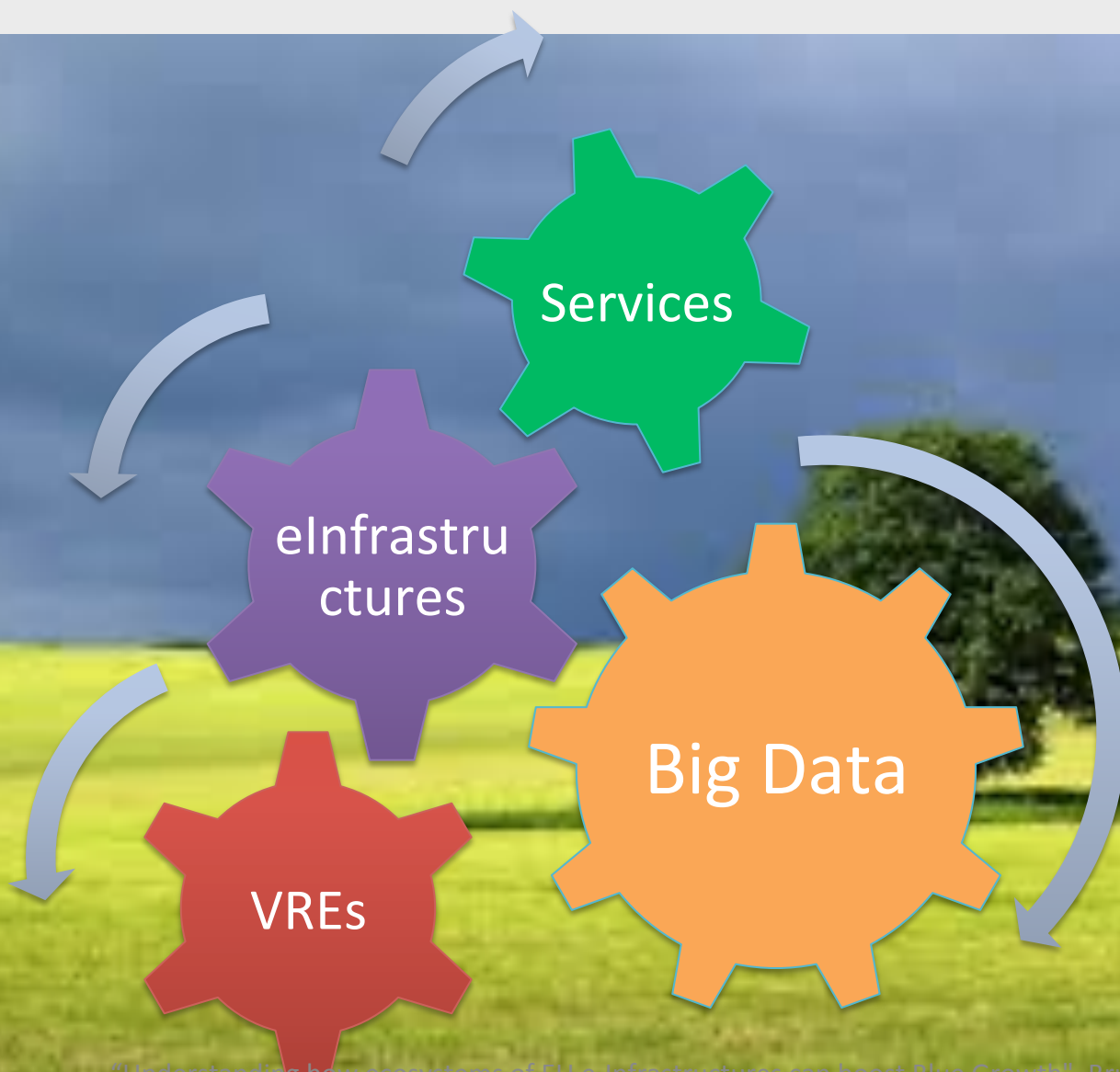
11 January 2017  
Brussels, Belgium

# BlueBRIDGE & the Blue Societal Challenge

To offer **new capacity** to interdisciplinary communities actively involved in increasing scientific knowledge about **marine resource exploitation and ecosystems conservation** and about **performance improvement and sustainability in aquaculture**



# A new landscape



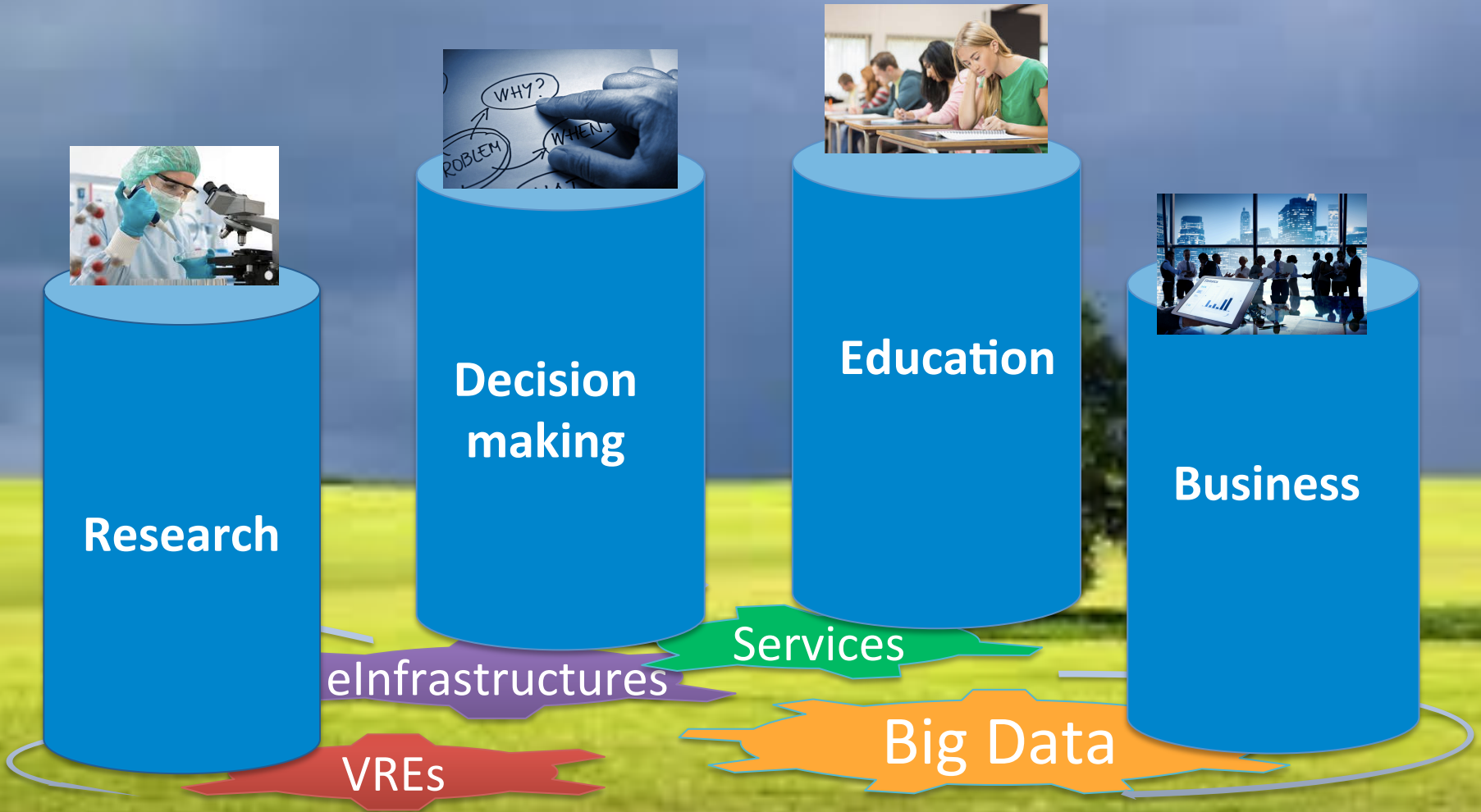
# BlueBRIDGE objective

To exploit the new technological landscape for facilitating **communities of scientists, innovators from SMEs and educators from different domains** in their **knowledge production chain**, from the initial phases, data collection and aggregation, to the production of indicators for competent authorities and investors.

# BlueBRIDGE user communities

Communities span from **EU and International world-renowned leading institutions** (e.g. ICES, IRD, FAO, UNEP), providing informed advice on **sustainable use of marine resources** to relevant Commissions and member countries, till local level organizations, like national academic institutions and SMEs.

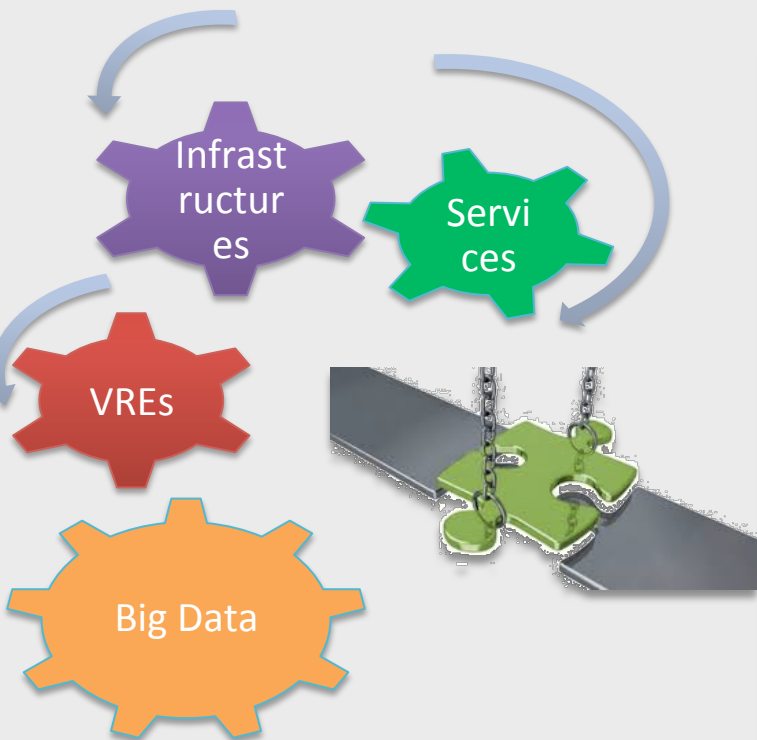
# Bridging sectors



# BlueBRIDGE

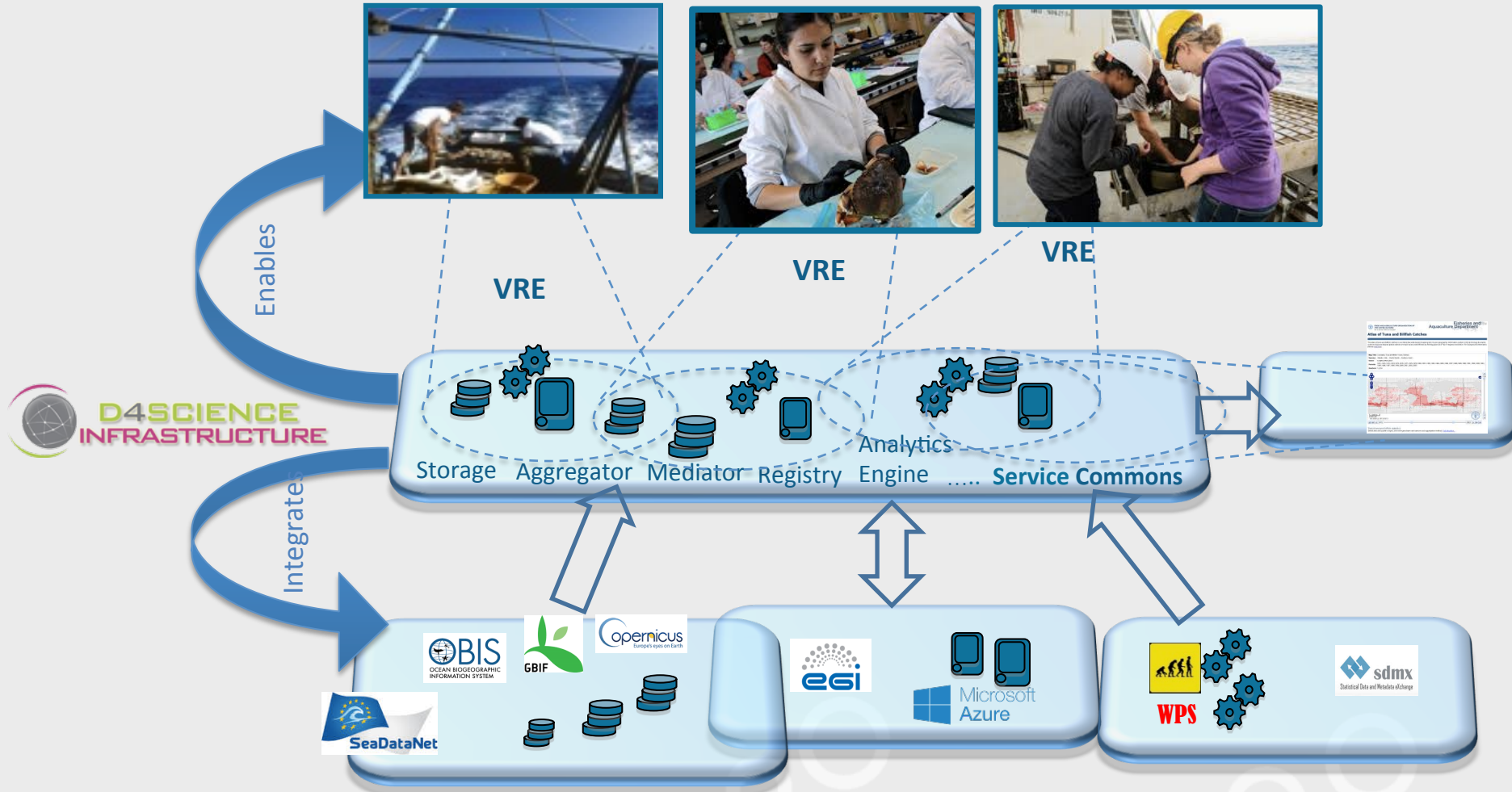
**B**uilding **R**esearch environments fostering  
**I**nnovation, **D**ecision making, **G**overnance and  
**E**ducation  
for **Blue Growth**

# Bridging the gap between offer & needs



- ☞ **Different, dynamically emerging goals**
- ☞ **Highly collaborative tasks**
- ☞ Actors operating in **different domains** (e.g. fisheries, biology, economics, statistics, environment, mathematics, social sciences, natural sciences, computer science)
- ☞ **Knowledge production chain** (e.g. collect, access, integrate, analyse and publish data)
- ☞ **Heterogeneous data sources**
- ☞ **Interest in reproducing, validating and re-use results of others & sharing own results**
- ☞ **Limited skill and availability of specific IT Lab**

# Bridging other infrastructures

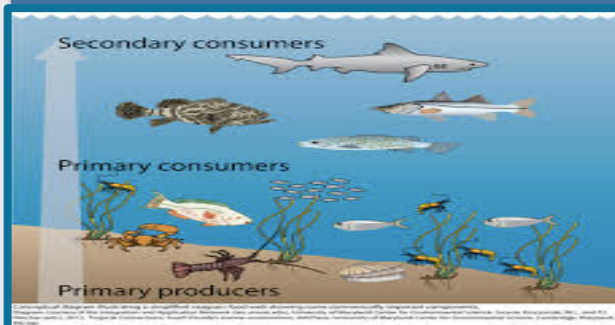


External e-Infrastructures, repositories & services

*Supporting assessment  
of stocks and fisheries*

*Improving  
performance  
and  
sustainability in  
aquaculture*

*Monitoring  
fisheries &  
habitat  
degradation*



# BlueBRIDGE actors

				
<p><b>IT Research &amp; Academic Institutions</b></p> <p>National Research Council of Italy</p> 	<p><b>Blue Growth related scientific institutions</b></p> <p>Food and Agriculture Organization of the United Nations</p> <p>ICES</p> <p>IRI</p>	<p><b>Companies</b></p> <p>ENGINEERING</p> <p>GRID</p> <p>CLS</p> <p>ITS</p> <p>GTE</p> <p>ForSys</p>	<p><b>Training, dissemination &amp; outreach specialists</b></p> <p>Trust-IT Services</p> <p>FOUR</p>	<p><b>Administration office</b></p> <p>ERCIM</p>

*Thank you*